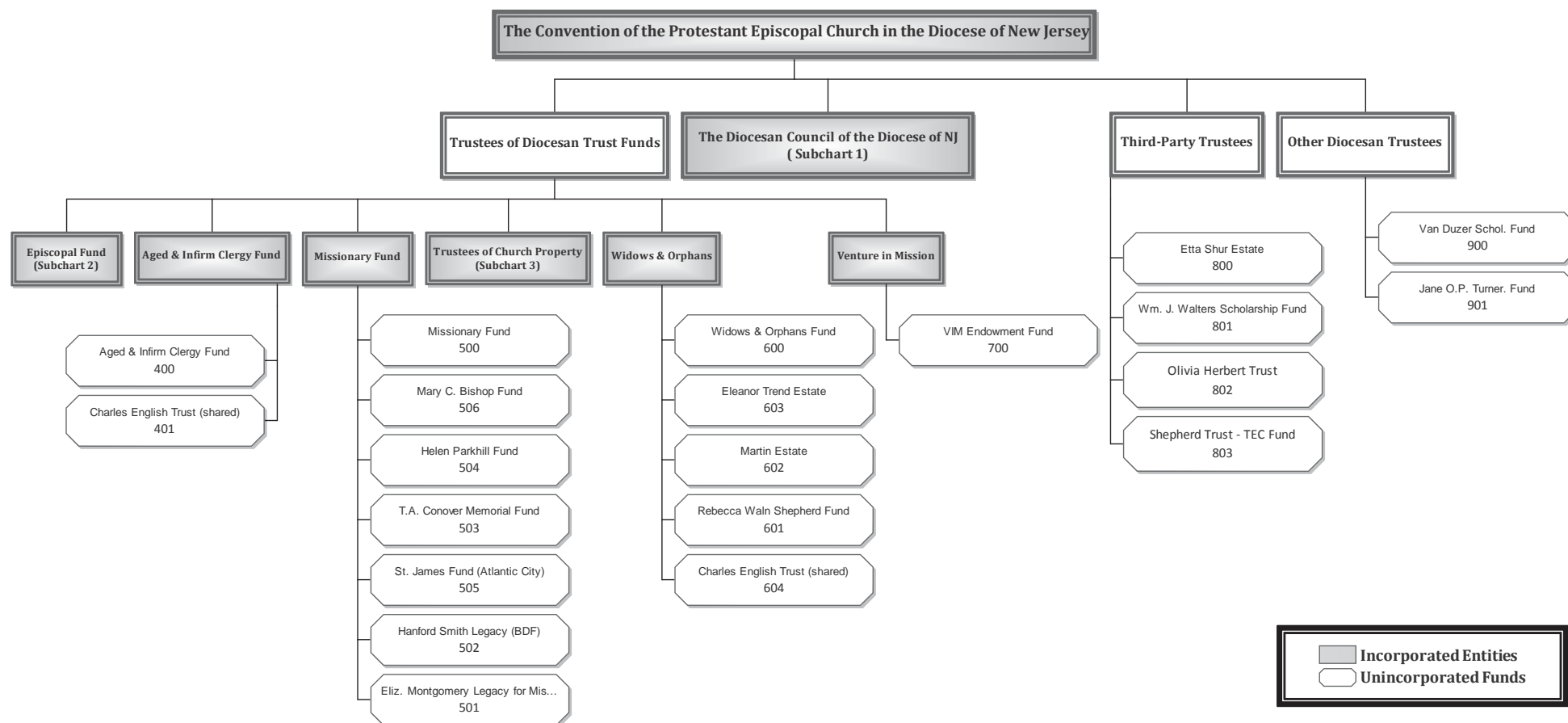


Episcopal Diocese of New Jersey Corporate and Fund Structure - Report to the 230th Convention

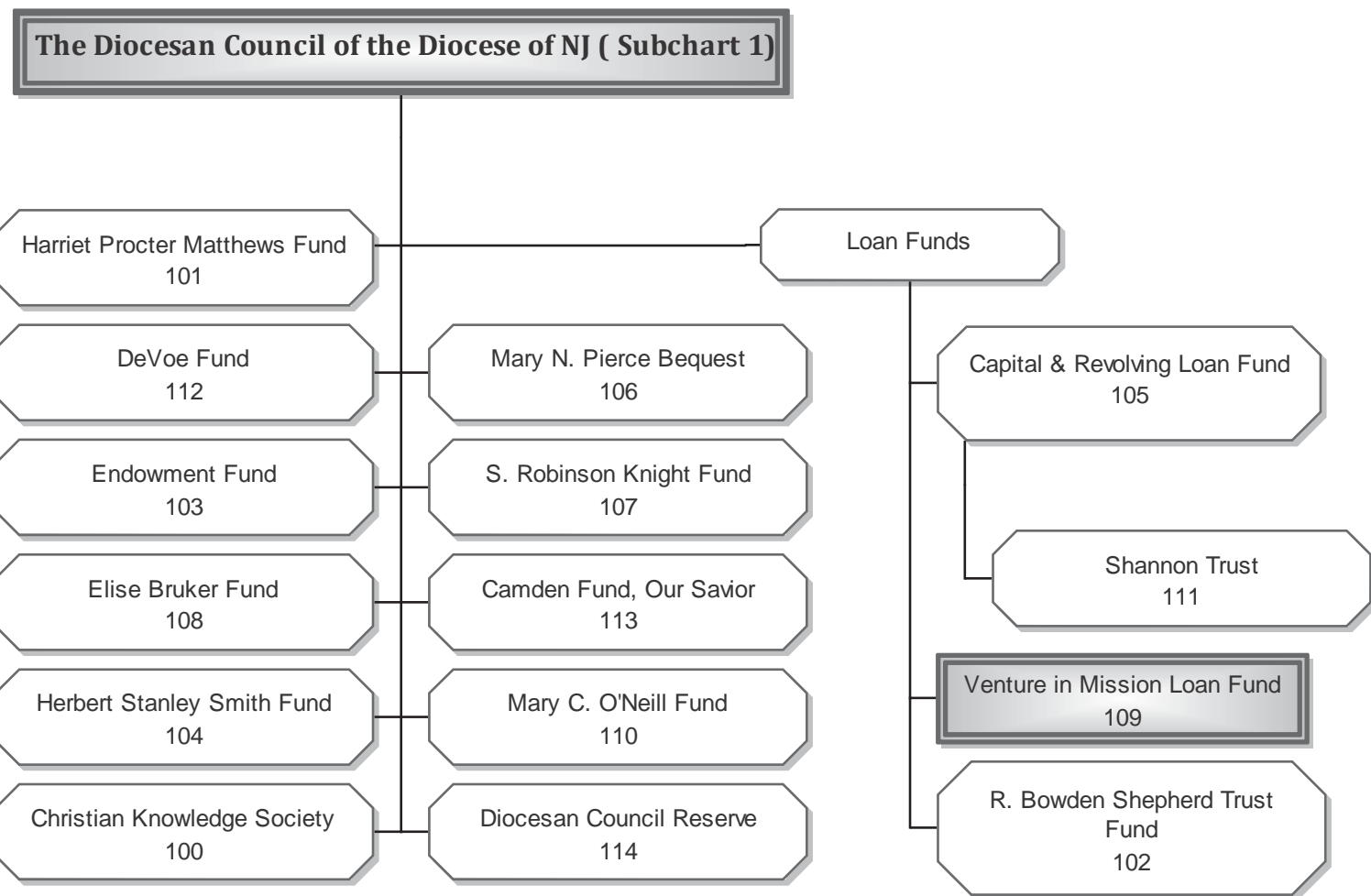


Date Issued: 02-25-13
 Note: BDF = Bishop's Discretionary Fund
 Page 1 of 4

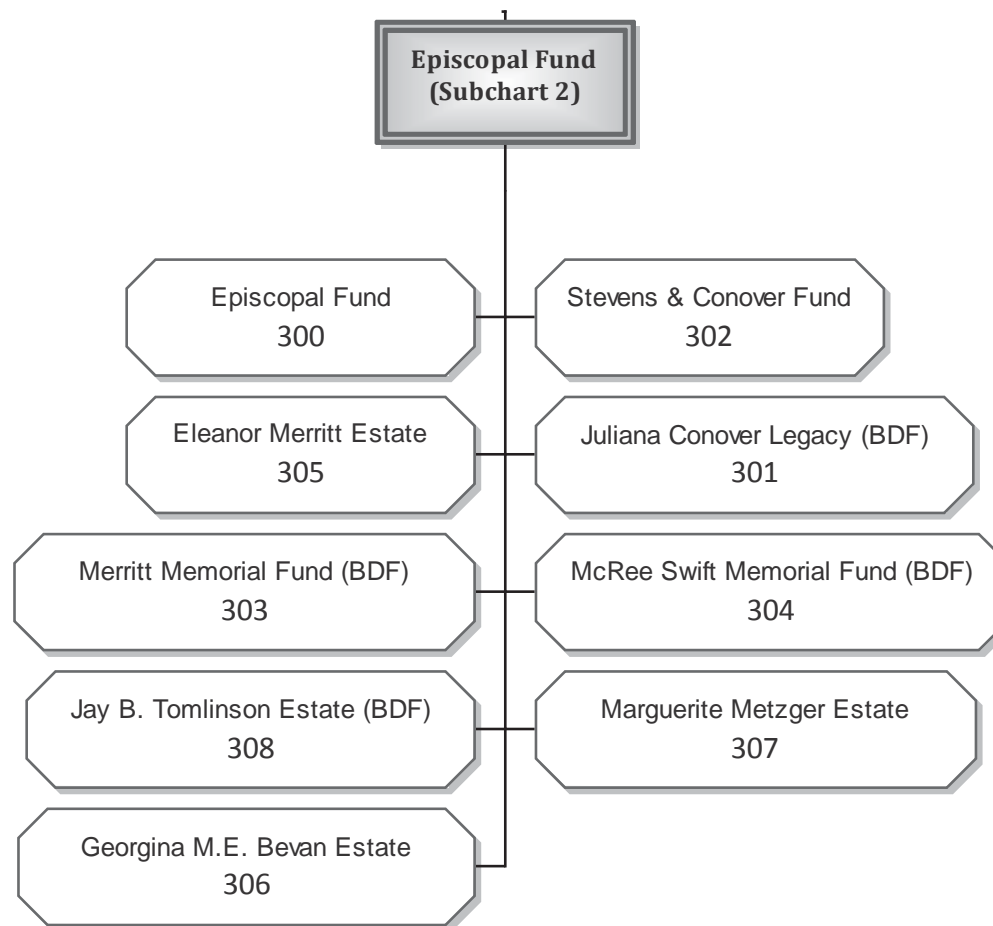
Full Legal Names of Incorporated Entities where abbreviated above are as follows:
 The Trustees of the Episcopal Fund of the Diocese of New Jersey
 The Trustees of the Aged and Infirm Clergy Fund of the Diocese of New Jersey
 The Trustees of the Missionary Fund of the Diocese of New Jersey
 The Trustees of Church Property of the Diocese of New Jersey
 The Trustees of the Widows and Orphans of Clergy Fund of the Diocese of New Jersey
 The Trustees of the Venture in Mission Endowment Fund of the Diocese of New Jersey
 The Trustees of the Venture in Mission Loan Fund of the Diocese of New Jersey

Exhibit XII

Episcopal Diocese of New Jersey
Subchart 1 - Diocesan Council
Corporate and Fund Structure - Report to the 229th Convention



**Episcopal Diocese of New Jersey
Subchart 2 - Trustees of the Episcopal Fund
Corporate and Fund Structure - Report to the 229th Convention**



Date Issued: 02-25-13

Note: BDF = Bishop's Discretionary Fund

Episcopal Diocese of New Jersey
Subchart 3 - Trustees of Church Property
Corporate and Fund Structure - Report to the 229th Convention

Exhibit XII

